

# DATE INSERTS WITH HIGH TEMPERATURE RESISTANT FOR ENGINEERING PLASTIC

New product, Patented in USA, JAPAN & EUROPE

Turn anticlockwise by  
screw driver, remove the  
inside arrow quickly.

Turn clockwise,  
inside arrow indicates  
numbers.

Engraved numbers and  
letters are easy to read.  
(UD font)



**Designed to withstand temperature up to 644°F (340°C)**  
**The inside arrow can be replaced from PL side without  
removing the mold plate.**

## Easy to mount and unmount the date insert

**With less rotation, mount and  
unmount the inside arrow.**



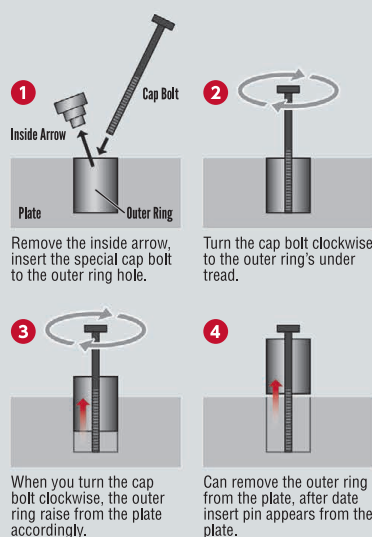
Mounting and unmounting  
are smooth because an  
undertread is little. To  
prevent a tread seizure and  
inside arrow crash, inner  
tread is shorter than old  
indexable date insert pin.

**To unmount the date insert pin from  
the plate, use only one cap bolt.**



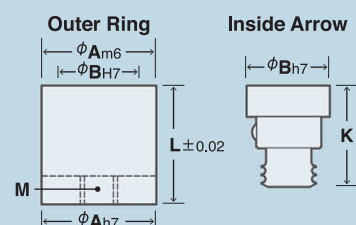
Insert the special cap bolt to  
the Date insert outer ring  
under tread and turn it to  
clockwise, can remove the  
outer ring from the plate. No  
need to make a hole from  
the plate's back and no  
need to disassemble the  
plate when you unmount the  
date insert pin.

## HOW TO UNMOUNT THE SPRING DATE INSERT PIN



## Dimension of Date insert

**Simple inner mechanics makes low  
maintenance cost and reasonable price.**



Outer Ring				Inside Arrow	
A	B	L	M	B	K
Outside Diameter	Inside Diameter	Full Length	Tap Hole	Outside Diameter	Full Length
4	2.6	8	M1.8×0.35	2.6	5.5
5	2.9	8	M2×0.4	2.9	5.5
6	3.95	8	M2.5×0.45	3.95	5.5
8	5	10	M3×0.5	5	7.1
10	6.3	12	M3×0.5	6.3	8.8
12	7.5	14	M4×0.7	7.5	9.8
16	11	14	M5×0.8	11	9.8
20	13.2	16	M5×0.8	13.2	11.8